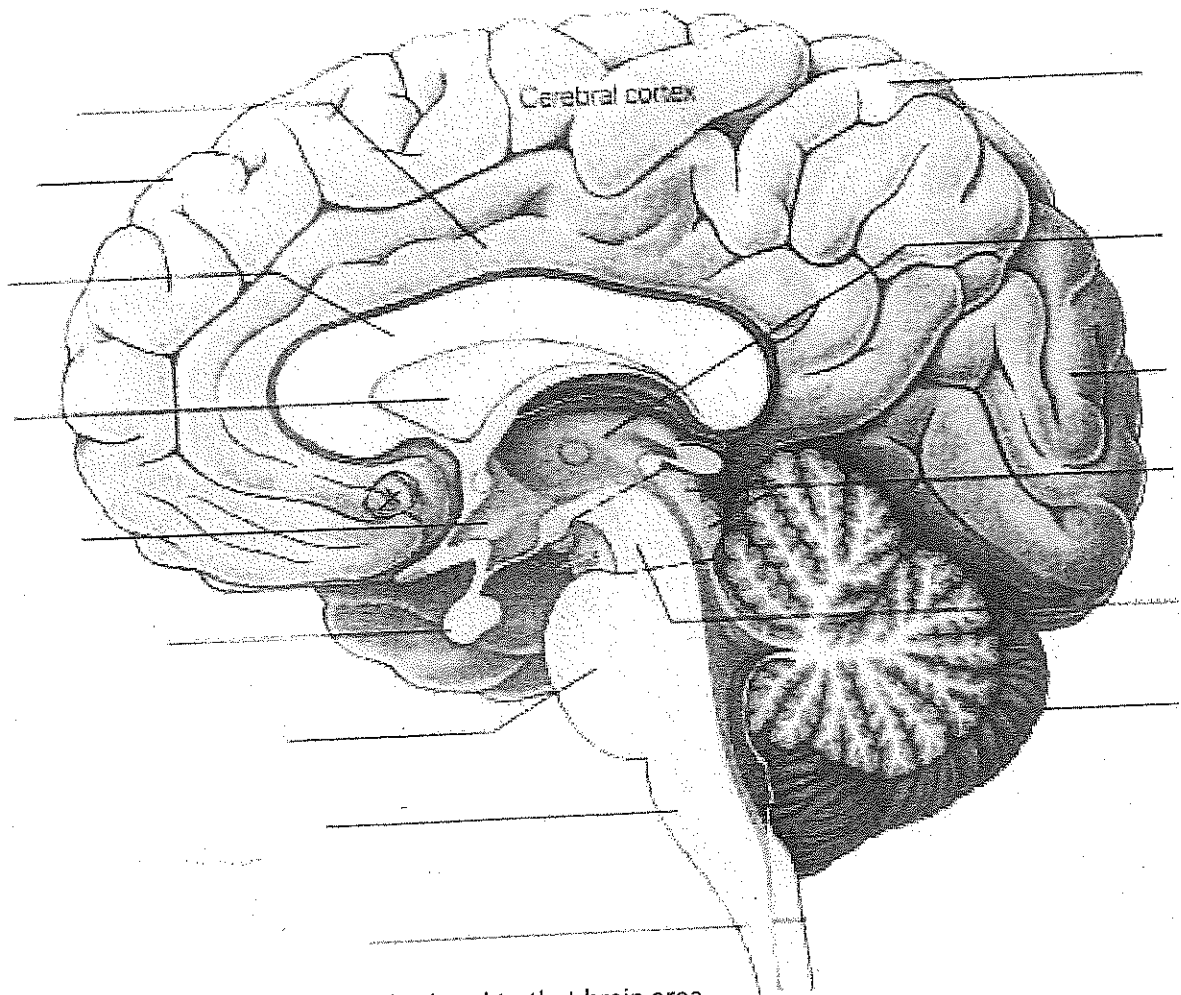


Place the letters below IN the appropriate location in the diagram OR by 1 of the arrows  
Some areas may have more than 1 letter placed on them.

- A Broca's area
- B central sulcus
- C cerebellum
- D frontal lobe
- E lateral fissure
- F medulla
- G occipital lobe
- H parietal lobe
- I pons
- J postcentral gyrus
- K precentral gyrus
- L primary auditory cortex
- M primary motor cortex
- N primary somatosensory cortex
- O primary visual cortex
- P spinal cord
- Q temporal lobe
- R Wernicke's area



Place the letters below on the line (or the X) related to that brain area

- A cerebellum
- B cingulate gyrus
- C corpus callosum
- D frontal lobe
- E hypothalamus
- F inferior & superior colliculi
- G medulla
- H midbrain
- I nucleus accumbens/basal forebrain
- J occipital lobe
- K parietal lobe
- L pituitary gland
- M pons
- N septum pellucidum/wall of lateral ventricles
- O spinal cord
- P thalamus