




**FUNDAMENTALS OF THEORY
DIAGNOSTIC EXAMINATION
SAMPLE**

Choose the proper note equivalent for the following rests:


1. 

Choose from: A. 

D. 

2. 

B. 

E. 


3. 

C. 

F. 

Choose the proper tied notes for the dotted notes given below:

4. 

Choose from: A. 

D. 

5. 

B. 


E. 

C. 

F. 

Choose the correct meter (time signature) for each rhythm:

6. 

Choose from: A. 


D. 

7. 

B. 

E. 

8. 

C. 

F. 

Choose the correct Pitch name for each note given below:

Choose from: A. F natural

F. A Flat

B. E natural

G. B flat

C. C sharp

H. G double sharp

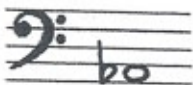
D. E sharp

I. D double sharp

E. F sharp

J. B double flat

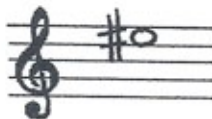
9.



10.



11.



12. Which of the following best illustrates the term "Enharmonic Relationship?"

A. E sharp – F flat

B. F sharp – G flat

C. B flat – C flat

D. G sharp - B double flat

E. A sharp – C double sharp

13. The order in which the sharps are placed on the staff for a key signature are:
- A. FGCD AEB
 - B. BEADGCF
 - C. FCGDAEB
 - D. FCDGAEB
 - E. FCGDEAB
14. The order in which the flats are placed on the staff for a key signature are:
- A. FGCD AEB
 - B. BEADGCF
 - C. FCGDAEB
 - D. FCDGAEB
 - E. FCGDEAB
15. Five sharps is the key signature for:
- A. B major
 - B. F major
 - C. E major
 - D. f# minor
 - E. C flat major
16. Three flats is the key signature for:
- A. F# major
 - B. E flat major
 - C. a flat minor
 - D. G flat major
 - E. D flat major

Choose the appropriate relative minor for each of the following major keys:

- | | | | |
|------------|--------------|------|------------|
| 17. E | Choose from: | A. a | F. f sharp |
| 18. C flat | | B. b | G. d sharp |
| | | C. c | H. c sharp |
| 19. A | | D. e | I. a flat |
| | | E. g | J. e flat |

20. Which minor key is parallel to the key of C major?
- A. f sharp
 - B. c
 - C. a
 - D. c sharp
 - E. none of these

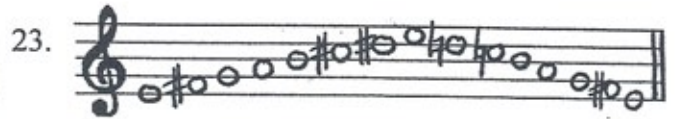
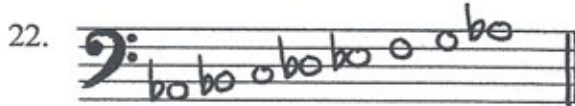
21. Which of the following interval patterns demonstrates a major scale?

(w = whole step; h = half step)

- A. w h w h w h w
- B. w h w w h w h
- C. w w w h w w h
- D. w w h w w w h
- E. w w h w w h w

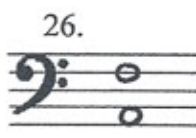
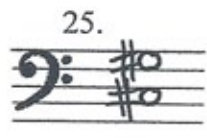
Choose the correct name for the following scales:

- Choose from:
- A. Melodic minor
 - B. Harmonic minor
 - C. Natural minor
 - D. Chromatic
 - E. Major



Choose the correct name for the following intervals:

- Choose from:
- A. major 2
 - B. major 3
 - C. major 6
 - D. major 7
 - E. minor 3
 - F. minor 6
 - G. perfect 4
 - H. perfect 5
 - I. diminished 5
 - J. augmented 4



27. If you count up from the root (note on which the triad is built) of a minor triad, what sequence of intervals do you find?

- A. minor third and a perfect fifth
- B. minor third and a diminished fifth
- C. major third and an augmented fifth
- D. major third and a perfect fifth

Identify the quality of the following triads:

- Choose from:
- A. major
 - B. minor
 - C. diminished
 - D. augmented

