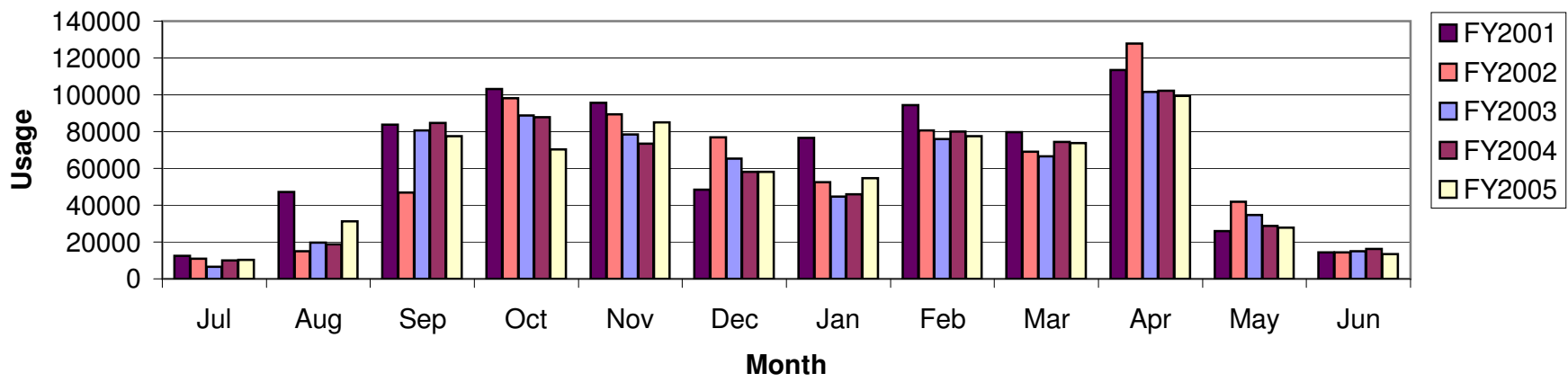


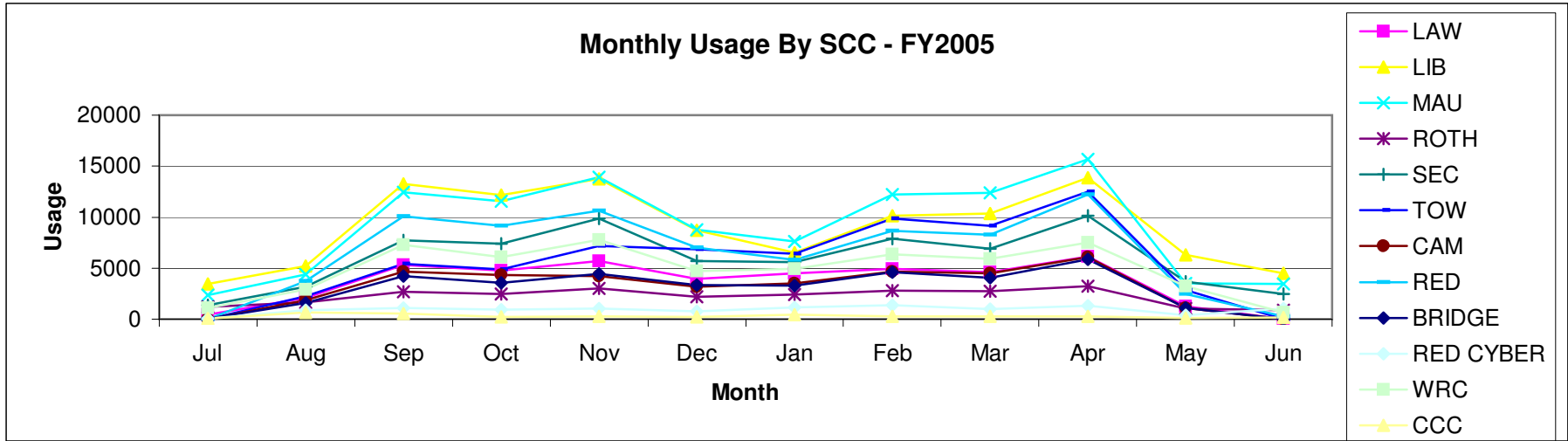
ITS - Student Computer Center Usage Statistics FY2005

07/01/2005

Center Name	Jul	Aug	Sep	Oct	Nov	Dec	Jan	Feb	Mar	Apr	May	Jun	Yearly	Percent
ADMIN	71	12	45	9	8	25	27	23	11	15	0	22	268	0.04%
BRIDGE	39	1585	4205	3588	4459	3322	3293	4580	4058	5861	1113	6	36109	5.32%
CAM	14	1851	4646	4321	4204	3205	3512	4659	4507	6055	1110	closed	38084	5.61%
CCC	37	636	530	234	256	208	451	267	293	271	120	151	3454	0.51%
LANG	52	925	2664	2634	3238	2331	1989	3098	2898	4028	652	closed	24509	3.61%
LAW	441	2064	5308	4762	5683	3946	4472	4937	4590	6151	1253	closed	43607	6.43%
LIB	3453	5214	13251	12146	13755	8726	6511	10118	10347	13836	6318	4472	108147	15.94%
MAU	2368	4395	12427	11571	13943	8780	7592	12209	12378	15666	3518	3459	108306	15.96%
RED CYBER	32	871	1115	941	1029	791	1157	1349	987	1316	361	1057	11006	1.62%
RED	closed	3732	10102	9160	10645	7010	5821	8648	8254	12195	2450	283	78300	11.54%
ROTH	1193	1666	2659	2486	2996	2179	2403	2781	2729	3244	1015	892	26243	3.87%
SEC	1383	3186	7707	7383	9874	5725	5600	7911	6921	10158	3690	2441	71979	10.61%
TOW CYBER	closed	closed	closed	closed	closed	187	406	575	528	678	169	closed	2543	0.37%
TOW	closed	2269	5432	4896	7153	6868	6406	9877	9168	12515	2860	closed	67444	9.94%
WRC	1098	2886	7311	6107	7760	4707	4917	6347	5936	7506	3245	639	58459	8.62%
FY2005	10181	31292	77402	70238	85003	58010	54557	77379	73605	99495	27874	13422	678458	-0.15%
FY2004	10072	18656	84596	87787	73284	58017	45909	79877	74258	102128	28684	16186	679454	0.27%
FY2003	6542	19761	80720	88674	78338	65370	44549	75884	66559	101443	34776	14987	677603	-6.26%
FY2002	11069	14987	46953	97996	89230	76924	52351	80534	68981	127684	41870	14257	722836	-9.13%
FY2001	12571	47085	83853	103118	95713	48428	76669	94423	79796	113495	26060	14245	795456	
FY2000	n/a	n/a	n/a	n/a	93069	58796	62320	94889	80461	104746	23236	18700		
FY1999	n/a	n/a	89479	94602	75634	54716	31525	58986	50506	65722	n/a	n/a		
FY1998	n/a	n/a	n/a	n/a	n/a	n/a	n/a	49842	38974	51353	n/a	n/a		

SCC Monthly Usage - FY2005





NOTE - Towers Center closed beginning of this year, substituted 1 small SCC in Bender hall.

NOTE - Towers Center reopened Nov. 7th